

PLAINFIELD PUBLIC LIBRARY

*****FOR IMMEDIATE RELEASE*****

Date: July 1, 2025

Contact: Mary Ellen Rogan, Executive Director
Plainfield Public Library

Plainfield Public Library Begins \$2.3M Renovation July 7

Upgrades include a teen center, new program rooms, a community plaza, and improved technology services.

The Plainfield Public Library will begin a major construction project on July 7, 2025, with the goal of improving the building's infrastructure and enhancing the overall experience for patrons.

The \$2,365,000 award is funded through the Coronavirus Capital Projects Fund (CPF) and is administered through the U.S. Department of the Treasury. Funds are distributed by the New Jersey State Library through their Community Center Digital Connect program.

The Plainfield Public Library was selected as one of 18 award recipients throughout the State of New Jersey. The funding requirements are to facilitate upgraded network infrastructure, education, and health monitoring, including agency partnerships.

The Community Center Digital Connect project will create new rooms for community service programming, establish a dedicated teen center, and make way for a community plaza. The new community plaza will be made possible by demolishing the existing interior fountain, allowing the library to open up the floor plan and make better use of valuable square footage. The renovation will also add extra floor space to the main reading room on the upper level.

"As a homage to the existing fountain, we'll still feature a water element—though on a much smaller scale—but the additional space will better position the library to serve our community's evolving needs now and into the future." said Cynthia Slade, Library Board President.

The project supports educational initiatives contributing to workforce development through increased job programming and fairs in collaboration with community partners. A comprehensive technology upgrade will improve digital connectivity, expand Wi-Fi capacity, and add new public computers to meet growing demand.

800 Park Avenue
Plainfield NJ 07060
908 / 757-2305
Fax 908/754-0063

www.plfdpl.info



The construction will also include updated meeting spaces. While some areas of the library may be temporarily closed or relocated during the renovation, staff will work to minimize disruptions and ensure continued access to core services.

The project is expected to continue through the Fall. Patrons are encouraged to check the library's [website](#) and social media for updates on service changes throughout the construction period.

For more information about the New Jersey State Library's Community Center Digital Connect program and to view the full list of awarded projects, visit https://www.njstatelib.org/services_for_libraries/grant-opportunities/community-center-digital-connect/

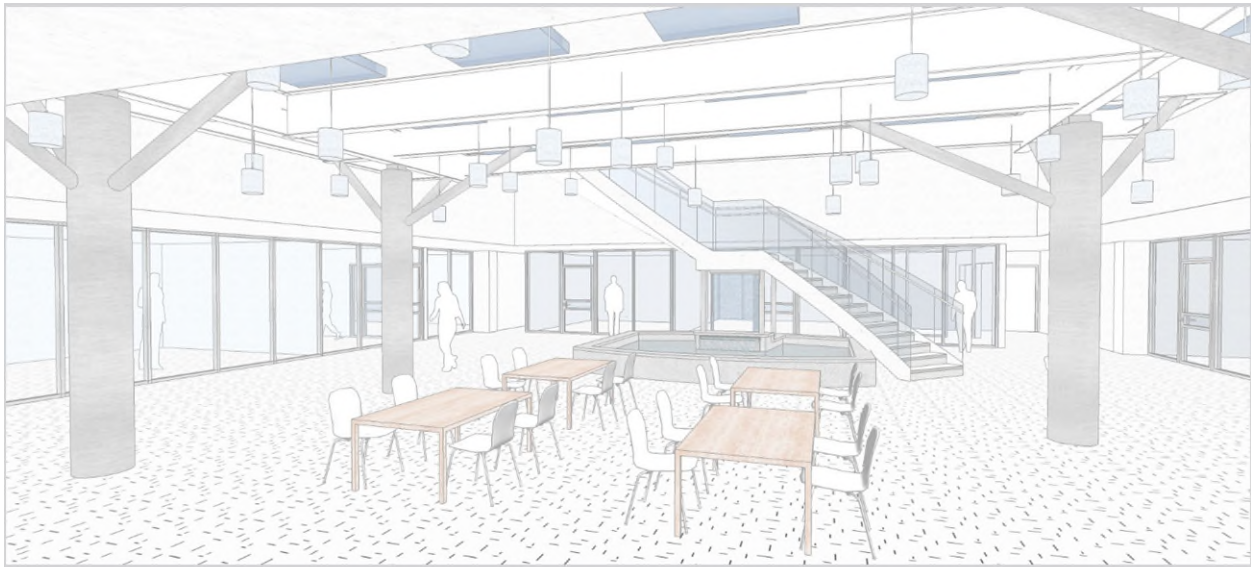


Figure 1- Rendering of lower level

Plainfield Public Library is located at 800 Park Avenue. For hours of operation, call 908-757-1111 or check the website at www.plainfieldlibrary.info.

END - END